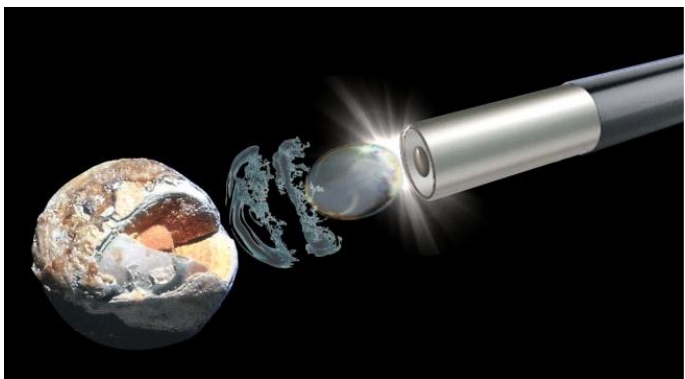


The AUTOLITH[®] Touch

BiPolar Electrohydraulic Lithotripsy System



***Safe, Simple, Convenient and Affordable.....
Biliary Stone Lithotripsy***



- Color touch screen control
- New design delivers greater stone fragmentation capability
- Sterile disposables probes for all stone types
- Simplified operation
- Lightweight and portable
- A fraction of the cost of other lithotripsy systems

NORTECH[™]
NORTHGATE TECHNOLOGIES INC.

The AUTOLITH[®] TOUCH

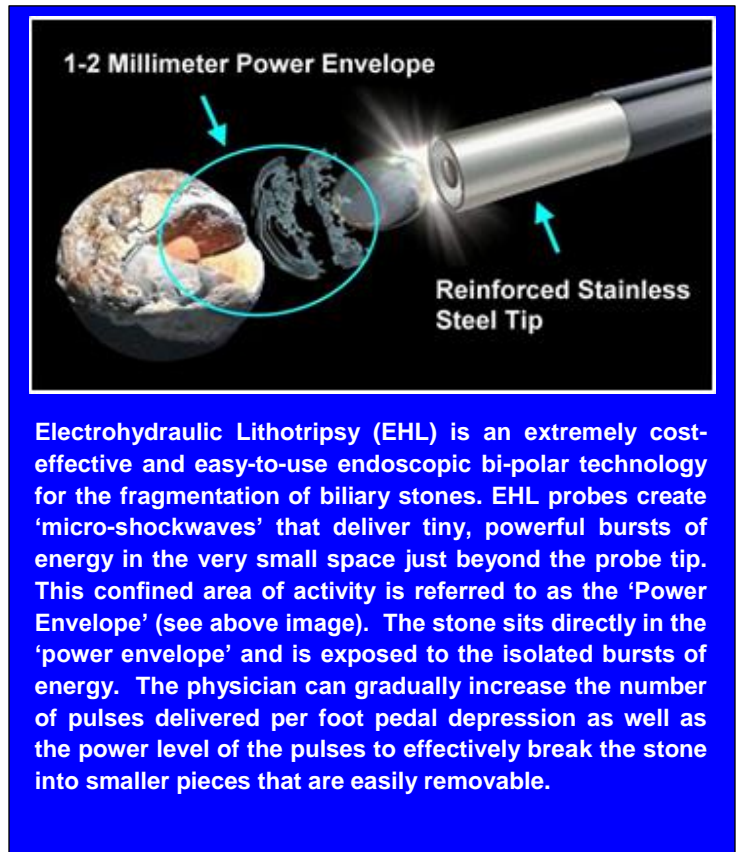
BiPolar EHL Systems for Biliary Stone Fragmentation

The new AUTOLITH[®] Touch lithotripter from Northgate Technologies provide a **safe, simple and convenient** method of delivering bipolar ElectroHydraulic Lithotripsy (EHL). The EHL probes are used endoscopically to successfully fragment all types of stones formed in the biliary system.

The AUTOLITH[®] utilizes a touchscreen control module that makes user selection of 'power' and 'pulse' values as simple as possible. Preferred and stored default settings can be applied and multiple language selections are available.

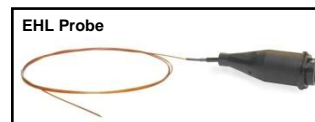
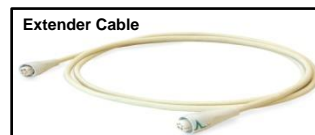
The system offers several different disposable probe designs and also has enhanced power output to further facilitate destruction of more difficult-to-treat stones. This next-generation device is an improved tool for the physician and an essential component of any modern stone-management program.

The AUTOLITH[®] TOUCH



Electrohydraulic Lithotripsy (EHL) is an extremely cost-effective and easy-to-use endoscopic bi-polar technology for the fragmentation of biliary stones. EHL probes create 'micro-shockwaves' that deliver tiny, powerful bursts of energy in the very small space just beyond the probe tip. This confined area of activity is referred to as the 'Power Envelope' (see above image). The stone sits directly in the 'power envelope' and is exposed to the isolated bursts of energy. The physician can gradually increase the number of pulses delivered per foot pedal depression as well as the power level of the pulses to effectively break the stone into smaller pieces that are easily removable.

Accessories



™/® trademarks and registered trademarks of or used under license by NORTHGATE Technologies Inc.

Ordering Information:

- **9-202-00**AUTOLITH[®] TOUCH SYSTEM*, 100-230VAC, 50/60Hz. (For Biliary Stones)

*AUTOLITH[®] system includes: Extender Cable, Pneumatic Foot-Switch, Power Cord, Operator's Manual
(Disposable EHL probes are sold separately)

Disposable BiPolar EHL Probes for use on the AUTOLITH[®] Touch EHL Generators

- **9-202-3751**1.9fr. (.63mm) Biliary Probe (375cm) (Sterile) 1/Box
- **9-202-2501**1.9fr. (.63mm) Biliary Probe (250cm) (Sterile) 1/Box

AUTOLITH[®] System Accessories

- **9-001-00**Foot Pedal
- **9-003-00** Hospital Grade Power Cord for U.S.
- **9-004-00** Extender Cable



Northgate Technologies Inc. 1591 Scottsdale Court Elgin, IL 60123 USA
800 348-0424 • 847 608-8900 • Fax: 847 608-9405 • www.northgate-tech.com